

**Friends of
Frampton Farm**

HOME EDUCATION / HYBRID COURSE

Entry level 2 working life skills

(Animal Care)

9 years plus



framptonfarmeducation.co.uk

Entry Level 2

What are the advantages of doing this course?

An Entry Level 2 course offers children aged 9 years plus a supportive and accessible introduction to structured learning, helping them build confidence while working towards a recognised qualification.

It allows learners to progress at a suitable pace, combining both theory and practical activities to suit different learning styles.

This level helps develop essential skills such as following instructions, completing tasks, and working independently, while also encouraging responsibility and routine.

For many home-educated learners, it provides a gentle stepping stone into formal education and creates a strong foundation for progression onto higher-level courses in the future.



Hybrid model

The hybrid structure allows learners to complete the theory element of the course at home, supported by parents and accessed through Moodle at a pace that suits each individual child. Worksheets form part of the learning, which can be uploaded for a dedicated tutor to review. These are used as evidence towards their City & Guilds qualification.

Learners will also attend the farm approximately once a month to take part in practical sessions and formal assessments, where they can apply their learning in a real, hands-on environment.

This blended approach helps to reduce overall costs for parents and is particularly beneficial for children who may feel anxious in larger group or classroom-based settings, offering a more flexible and supportive way to learn. We encourage children to attend independently however parents can stay on the farm if needed.

Course Criteria

The course includes a blend of animal care units alongside essential working life skills. Each unit is allocated a number of suggested guided learning hours, which incorporate both theory and practical learning activities.

Assessment for the animal care pathway includes practical demonstrations as well as oral questioning. Where appropriate, learners who are less confident with verbal responses may complete these assessments in written form instead.

For the working life skills component, there is a small amount of written or typed work required.



Course units

215 Feed farm animals

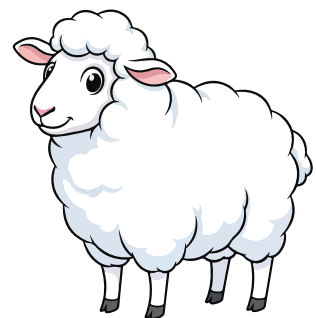
Introduces learners to the basic principles of animal nutrition and safe feeding practices across a farm setting. It helps develop an understanding of different feed types, correct portioning, and the importance of meeting the dietary needs of various livestock to maintain health and welfare.

216 Bed down farm animals

Focuses on the safe and appropriate preparation of animal housing to ensure comfort, hygiene, and welfare. Learners develop skills in selecting and using suitable bedding materials, maintaining clean and dry resting areas, and understanding how good bedding management contributes to animal health and reduces the risk of illness or injury.

218 Move a farm animal

Introduces learners to the safe and controlled handling of livestock within a farm environment. It develops practical skills in planning and carrying out animal movement using appropriate techniques and equipment, while ensuring the welfare, calmness, and safety of both the animal and handler at all times.



Course units



221 Provide food and water for poultry

Teaches learners how to safely and correctly meet the nutritional and hydration needs of poultry. It covers selecting appropriate feed and ensuring clean, fresh water is always available, while maintaining good hygiene practices to support health, welfare, and disease prevention within a poultry environment.

222 Clean poultry accommodation by hand

Develops learners' practical skills in maintaining a clean and hygienic environment for poultry. It focuses on the safe removal of soiled bedding and waste, thorough cleaning of housing and equipment, and the importance of good biosecurity practices to help prevent disease and promote high standards of animal welfare.

224 Collect & sort poultry eggs

Teaches learners how to safely collect eggs from poultry housing and handle them with care to prevent damage. It also covers the correct methods for sorting eggs based on quality and cleanliness, while maintaining hygiene standards to ensure food safety and support good farm management practices.

234 Recognise types of foods and feed small animals

Introduces learners to the different types of diets suitable for small animals and how to identify appropriate feeds. It also develops practical skills in safely preparing and providing food to meet the nutritional needs of small animals, while promoting good welfare and correct feeding routines.

Course units

203 Identify hazards

Helps learners develop the ability to recognise potential risks both within a working environment and in the home. It focuses on understanding how hazards can affect the safety of people and encourages learners to take responsibility for spotting, reporting, and reducing risks in order to maintain a safe and controlled environment.

209 Introduction to ICT

Introduction to ICT develops learners' basic skills and understanding of information and communication technology. It supports the use of simple digital tools for everyday tasks, helping learners build confidence in using devices safely and appropriately in both learning and working environments.

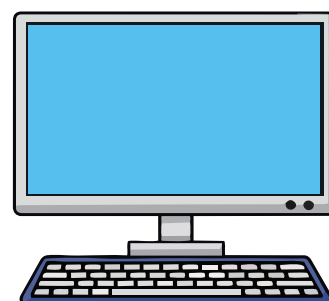
213 Working as part of a group

Learners develop essential teamwork and communication skills needed in both learning and workplace settings. It focuses on how to contribute effectively within a group, listen to others, share ideas, and complete tasks collaboratively while respecting different roles and responsibilities.

Optional units

For older children there are also units that cover work skills such as:

- CV writing
- searching for jobs
- applying for jobs



Course cost & Duration

Course Cost, Duration & Key Information

Cost: £995 per learner

This includes:

- City & Guilds registration and certification
- Full access to online learning platform (Moodle)
- All course resources and materials
- Monthly half or full practical farm sessions
- Tutor support via email or telephone
- Ongoing marking and feedback on submitted work

Payment Options:

- Payment plans available at £100 per month (10 payments over 10 months, final payment £95)
- 20% sibling discount when two or more siblings enrol at the same time

Course Duration:

- Approximately 12 months
- Flexible pace to suit individual learners
- Rolling start dates

Learning Structure:

- Online theory completed at home with parent support
- Monthly practical farm sessions for hands-on learning and assessment
- Mix of practical, oral, and written evidence for assessment

Time Commitment:

- Approx. 2–4 hours per week online study
- One half-day practical session per month on the farm.



Our tutors

Theory course

Our team is made up of a diverse mix of experienced farmers, teachers, and animal care tutors with expertise in SEN and SEMH support. You will be assigned a dedicated tutor to support your theory work. They will be available via email, or through pre-arranged telephone or Zoom appointments, to answer questions, provide guidance, and mark and review your assignments.

Practical sessions

One of our animal care tutors will deliver and support the practical training and will be present with your child during assessments to guide and support them throughout.

Farm-based learning is delivered in a fun, hands-on way to enhance and reinforce the theory-based learning.



Progression

What can I do after this course?

After completing an Entry Level qualification, learners can progress onto Entry Level 3, where they will build on their existing knowledge with more depth and independence

Ages 11 years plus can do our level 1 practical horticulture course which is done on site 1 day per week.

Ages 14 plus can move onto Level 1 Land Based Studies Animal Care hybrid or on site.

Age: 12 years+ Level 2 Animal Care on site or hybrid



Enrol today

Hybrid courses can be started at anytime, contact us to enrol your child or arrange an appointment to discuss the course further. Education@framptonfarm.co.uk

More Information:



Email: education@framptonfarm.co.uk



Frampton Farm, Hougham
Court Lane, Church Hougham,
Kent CT15 7AF